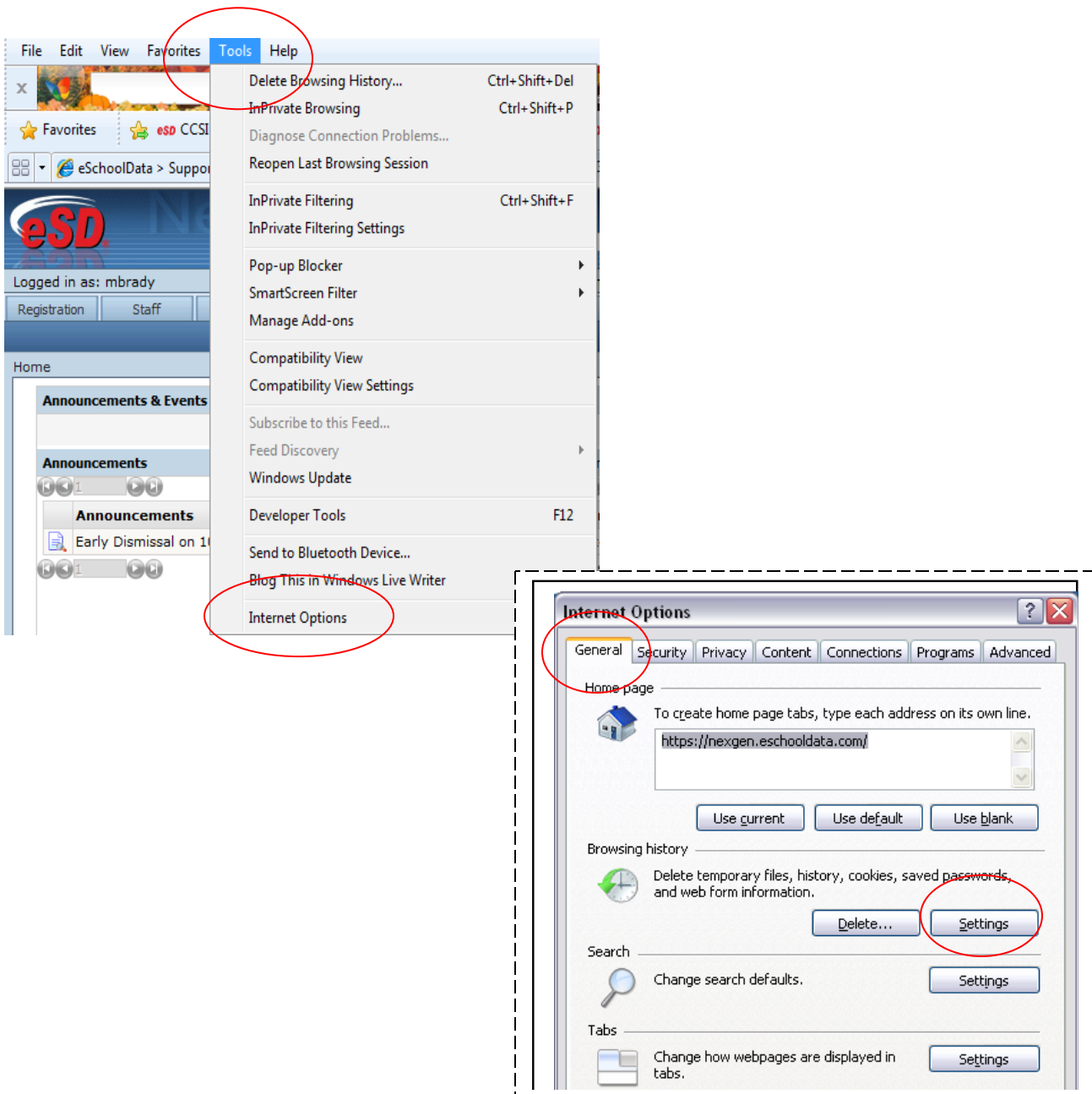


Internet Explorer 7 Settings

Follow the steps below to adjust the browser settings. These settings should be adjusted on all computers where eSchoolData will be accessed. **This is especially important for teachers working at home.**

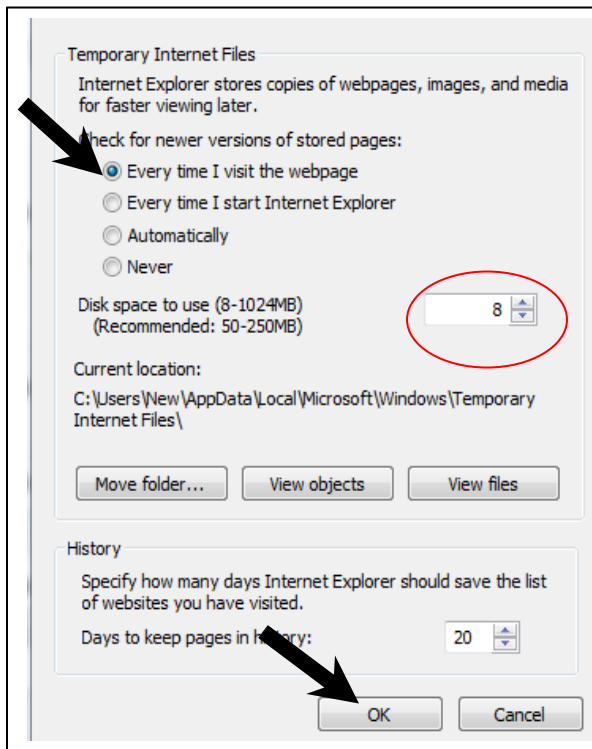
To change the settings:

1. Click on Tools and select Internet Options from the drop-down menu.
2. Click on the General Tab and Settings.



3. Select "Everytime I visit the webpage" and set the "Disk space to use" to 8 mb.

4. Click OK.



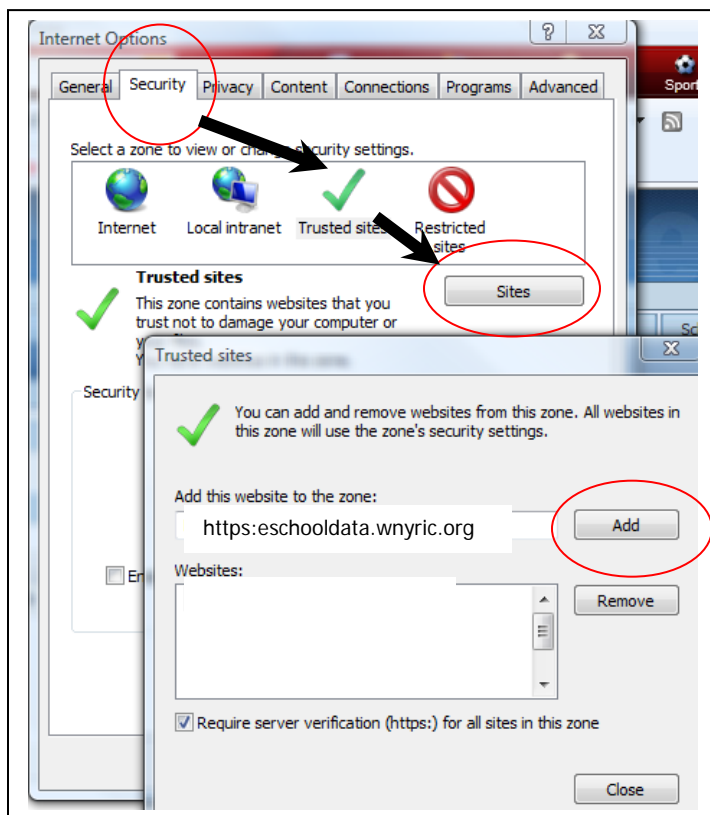
5. Next, click the Security Tab and click on Trusted Sites ✓ then Sites.

6. In the text box type the web address: <https://eschooldata.wnyric.org>

7. Click Add.

8. Click Close.

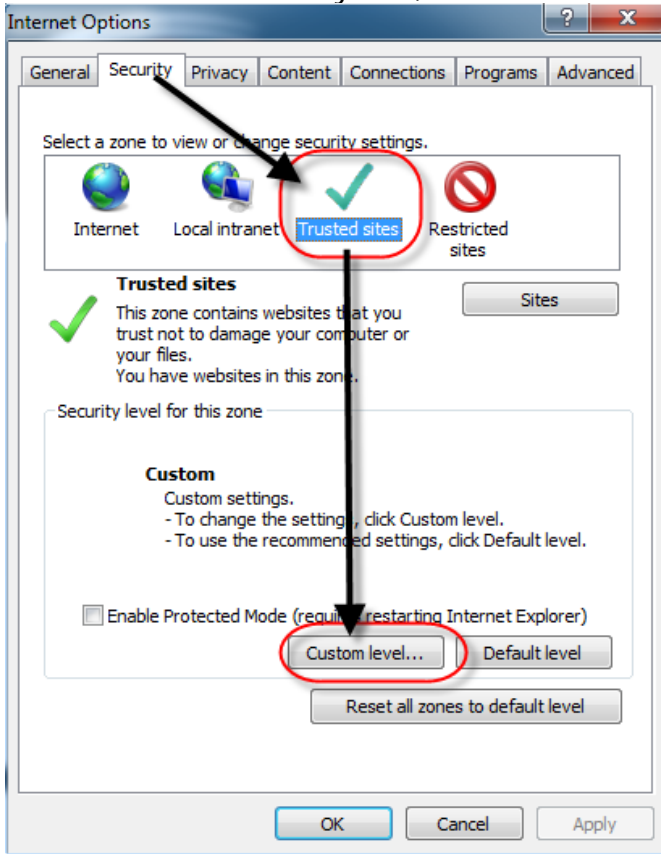
9. Click OK.



TIP:

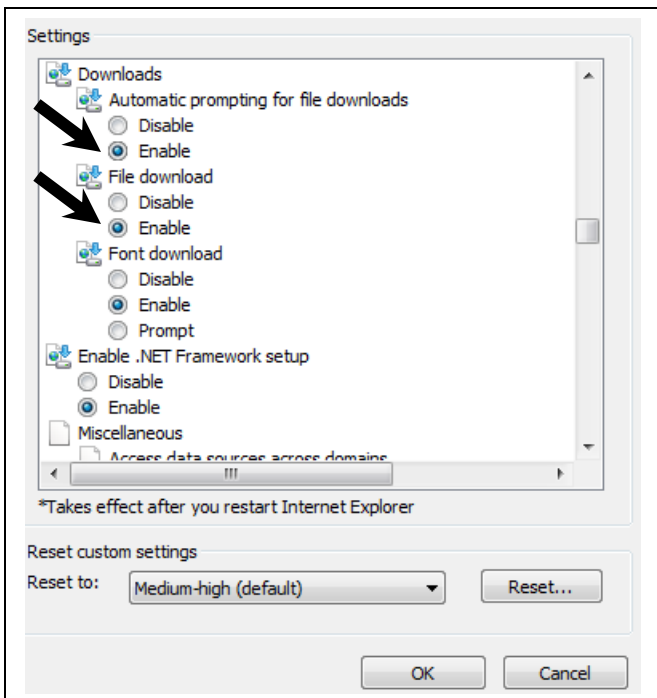
As an alternative, some users or districts may opt to add https://*.wnyric.org to the trusted sites. This will allow all secure WNYRIC pages to be trusted.

10. Back on the Security Tab, click Trusted Sites and then click Custom Level



Scroll down to the Downloads section and Enable the following settings:

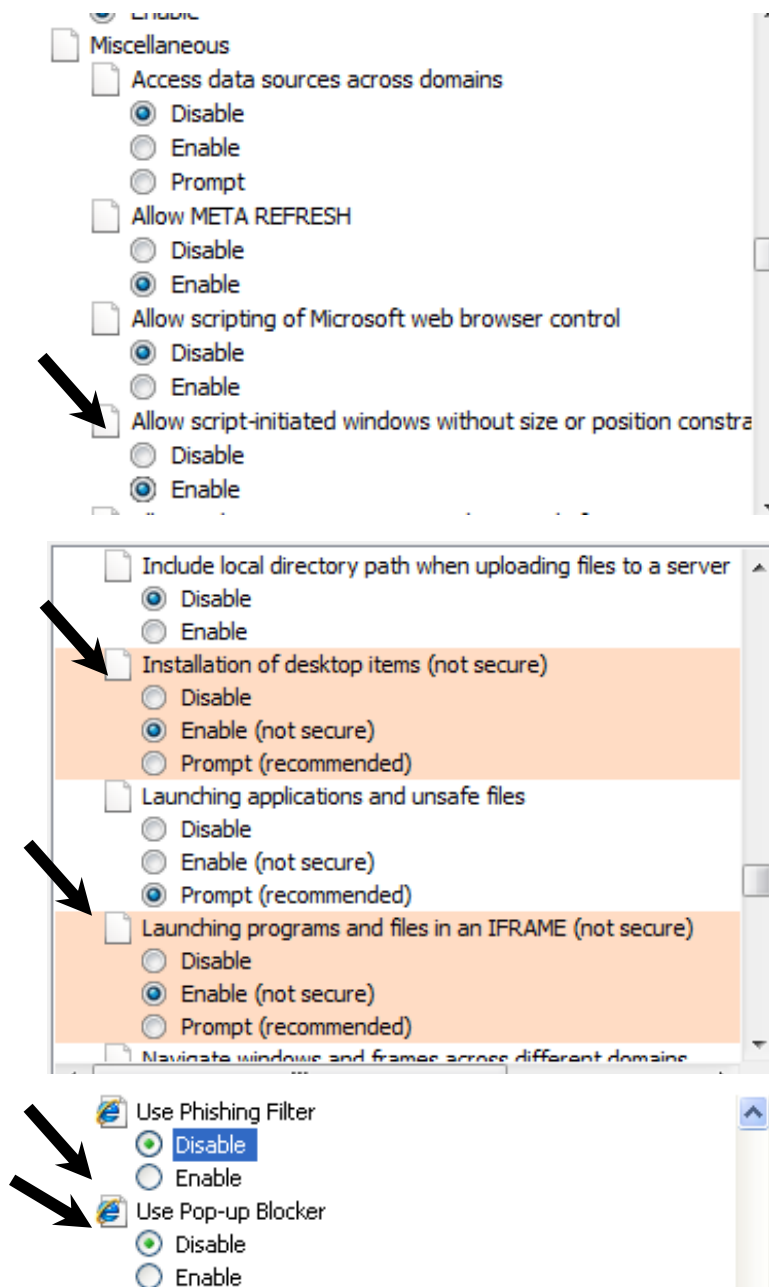
- Automatic prompting for file downloads
- File download



Scroll down to the Miscellaneous section and Enable the following settings:

- Installation of desktop items
- Launching of program and files in IFRAME
- Allow scrip-initiated windows without size or position constraints.
- Disable the Phishing Filter
- Disable the pop-up blocker.

11. Click OK when finished.

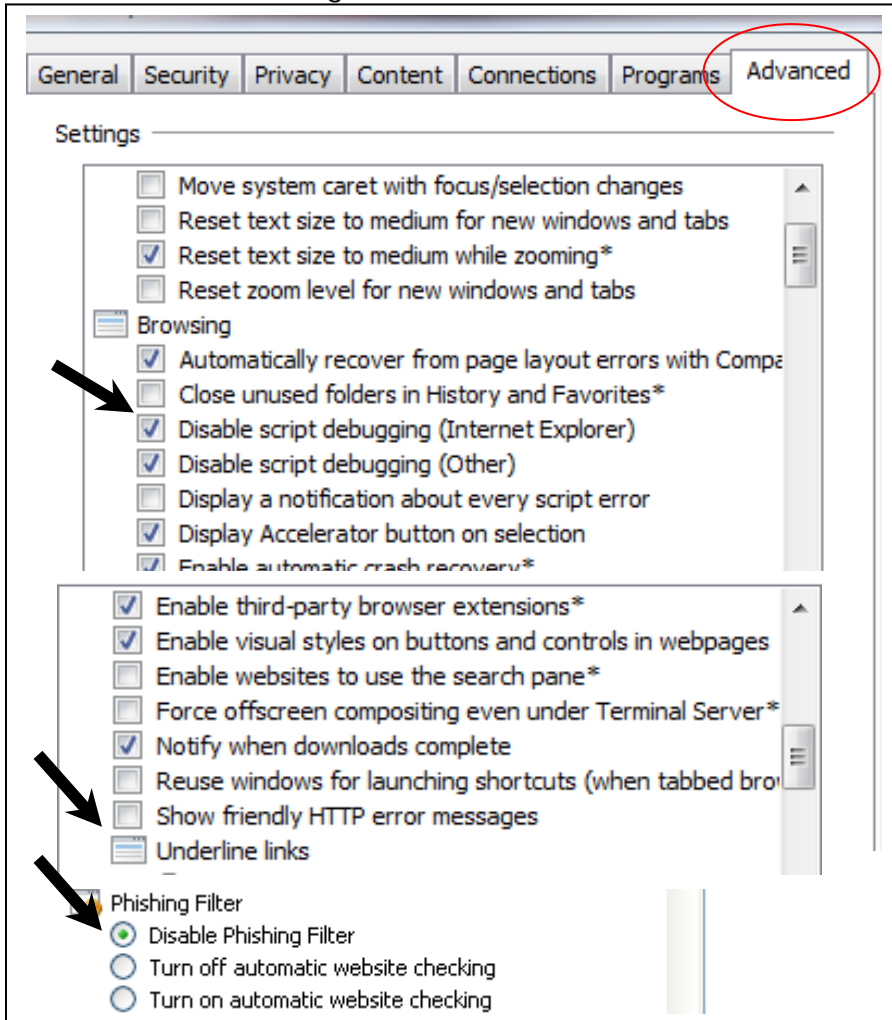


“Allow Script- Initiated Windows without Size or Position Constraints” must be enabled to allow eSchoolData popup windows to open.

12. Next, click on the Advanced Tab and Enable the following settings:

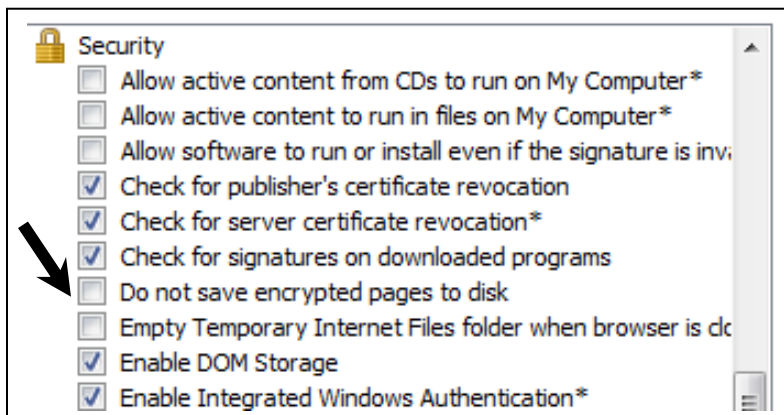
Scroll down to Browsing section

- Check the box for Disable Script Debugging
- Uncheck the box for Show Friendly HTTP error messages.
- Disable the Phishing Filter



Scroll down to the Security section

- Uncheck the box for Do not save encrypted pages to disks.



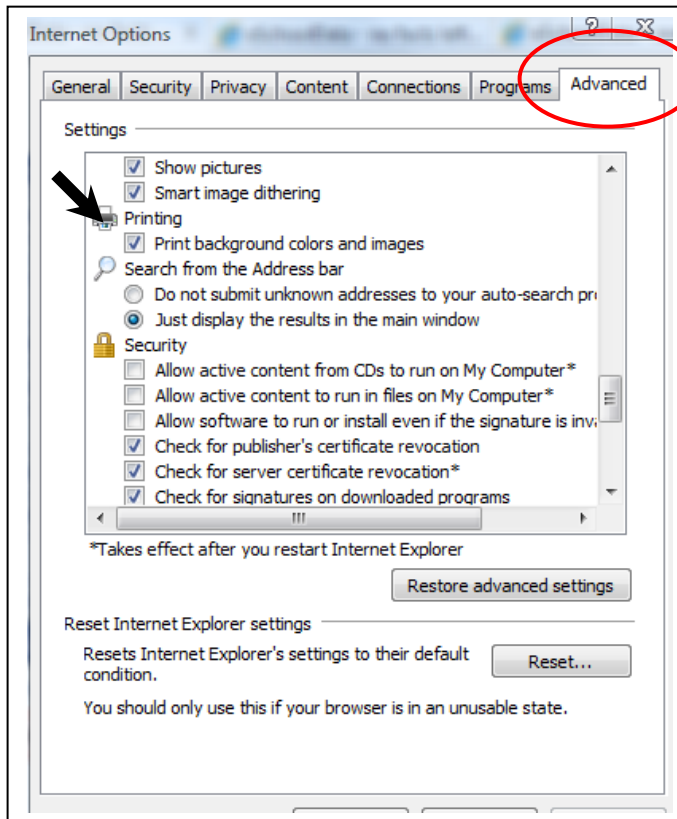
For the new settings to take effect, please close the browser and reopen.

13. Click OK when finished.

If printing report cards or progress reports locally, there is an option to have the report cards print with grids. To turn the option on:

1. Click on Tools and select Internet Options from the drop-down menu.
2. Click on the Advanced Tab.

Scroll down to the Printing section and turn on the option to print background colors and images.

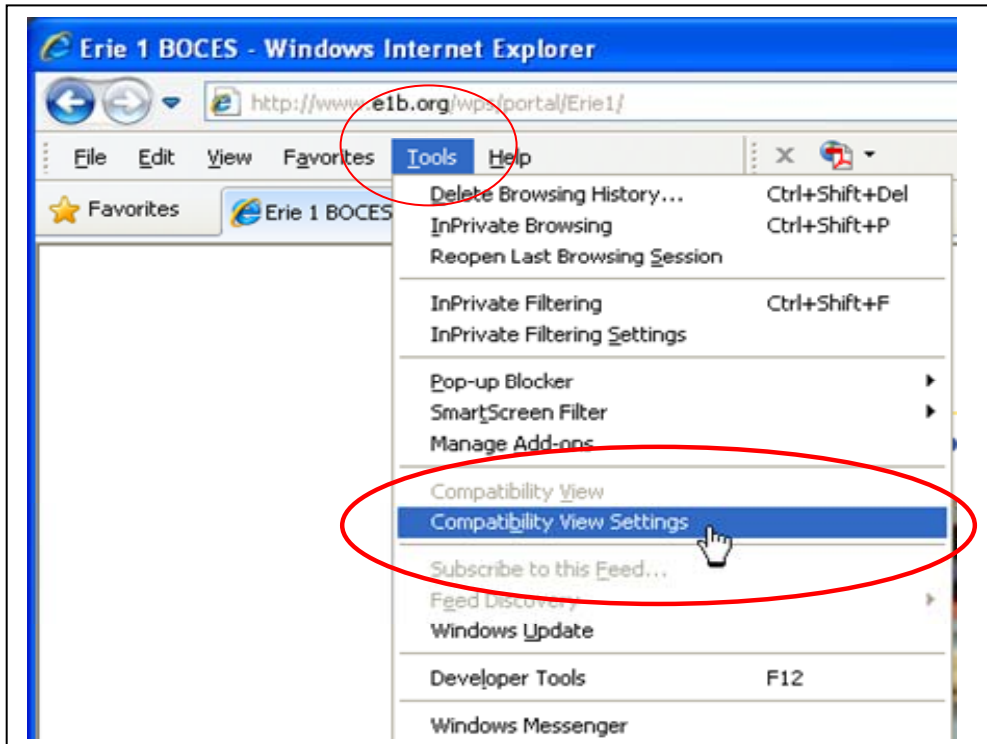


By adjusting the settings anything you print from the internet will now print with backgrounds, so you may only want to turn it on when printing reports cards and progress reports.

Internet Explorer 8

IE8 users should set the compatibility view settings in addition to the prior settings changes.

1. Click on Tools and select Compatibility View Settings from the drop-down menu.



2. Check the "Display all websites in Compatibility View". Click Close.

